



# Alta-1 College Performance Report

## For the year ending December 2014

As a condition for receiving Australian Government funding under the Schools Assistance Act 2004, the Australian Government has outlined a range of accountability requirements, including publication of financial information and reporting on school performance.

This information is presented to the school community through the school website [www.alta-1.com](http://www.alta-1.com) and a copy is available to all parents on request.

## Information About the School

During the 2014 school year, Alta-1 College provided programs for “at risk” and disengaged senior school students aged between 12-19 years old. These programs included a projected based engagement course for middle school students and year 11 and 12 courses of study that lead towards a Western Australian Certificate of Education (WACE). A personal development courses that assist the students to address personal issues is delivered to help address the factors that impinge on their learning and progression into the world of work or further training. This year saw an expansion of the College’s offerings, with the addition of courses for housebound middle school students through “ConnectEd”, A middle school Girls Class in Joondalup and a senior secondary class in Merriwa

Courses delivered to senior school students in 2013 included:

- English 1A, 1B, 1C, 1D
- Maths 1B, 1C
- Applied Information Technology 1A, 1B
- Food Technology 1A,1B
- Religion and Life 1A, 1B
- Workplace Learning
- Personal Recovery and Community Building

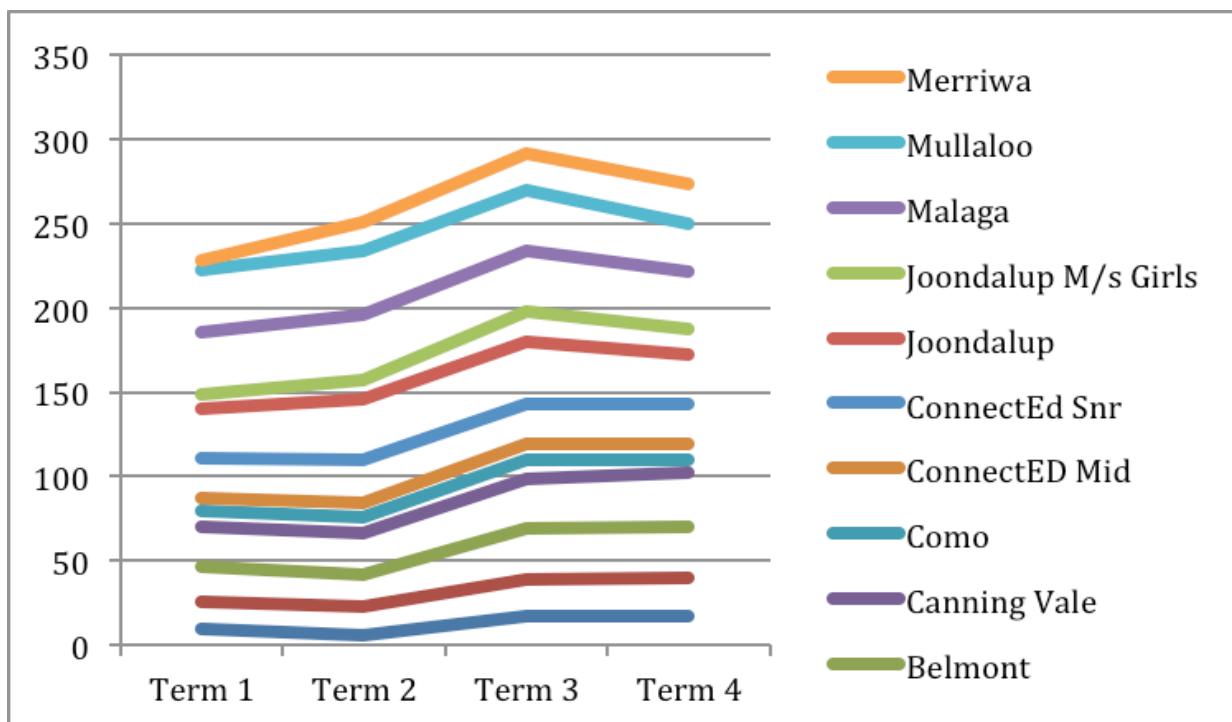
Students in the middle school pursued an integrated learning approach through the development of 5 week, cross-curricular teaching and learning units.

## School Developments

- Early 2014 saw the launch of a middle school class in the Winton road area of Joondalup. A number of students successfully engaged with the class and progressed to the senior secondary class.
- Due to pressure of student numbers in the northern corridor a class in Merriwa was established. Growth in this class has strong not only in student numbers but also personal/emotional engagement of the class.
- Our senior secondary and middle school ConnectEd class have developed substantially. This program has been designed to meet the needs of students who, for a variety of reasons, are house bound and need to access education in an alternative manner. The primary aim of the ConnectEd (Out of Class) Program is to provide such young people with a home-based educational program while at the same time offering teacher and pastoral support designed to facilitate their re-engagement into a regular Alta-1 class and program. The demand for places for younger, middle school students has led to the establishment of a ConnectEd middle school pilot, servicing 10 students this year.
- Students have been progressing through their Personal Recovery and Community Building Course. On the pathway to personal wellness, students are encouraged to develop an understanding of and focus on others and their issues, becoming “others focused”. To this end the school organized and conducted its fourth overseas trip to work with an organization providing accommodation and support to victims of abuse in East Timor.

## Information About the Student Body

- Enrolment trends 2014



- **Attendance**

In 2014 the average attendance rate of students actively engaged with the Alta-1 program was 64%% (A number of students have chosen to disengage from our program but remain on the official records until they engage in another course or school.) Disenfranchised young people demonstrate their thoughts and feelings, sometimes verbally but more specifically physically. Their non-attendance and disengagement from mainstream education is demonstrated as a physical act – they walk. The high level of attendance at Atla-1 is a credit to the students, their parents and the dedication and commitment of the school staff who regularly follow-up non-attendance through phone calls, social networking media and personal home visits.

- **Student destinations**

Destinations	Students
Return to Mainstream-	22
Voluntary Withdrawal (over school leaving age)	111
DET student tracking	13
Graduated Year 12	14
Moved to Another CARE School	07
Moved Interstate	12
Full time study with a registered training organization	31
Apprenticeship	06
Full-time employment	05
Overseas	03
<b>Total students left in 2014</b>	<b>224</b>

- **Year 11 completion**

In 2014, forty-one (41) students completed studies at the year 11 level.

- **Year 12 WACE completion**

This year fourteen (14) year 12 students completed the requirements to receive a Western Australian Certificate of Education, being year 12 graduation.

- **VET completion**

Ten students completed a vocational course of training at Certificate II standard or higher.

- **National testing results**

Alta-1 College students do not participate in any of the national testing programs such as Naplan; hence, no data exists on which to report.

### **Teacher Numbers and Qualifications**

- **Workforce Composition**

The following members of staff were employed in 2013

<b>Roles</b>	<b>Numbers</b>	<b>FTE</b>
Administrators (inc Principal)	5	4.8
Teachers	17	14.3
Teacher Assistants	13	8.4
Chaplains	15	14.1
Psychologists	1	0.4
Other (casuals)	8	2.38
<b><u>Totals</u></b>	<b><u>59</u></b>	<b><u>44.38</u></b>
Indigenous employees	0	0

- **Teacher Qualifications**

In 2014 each of the 17 teachers held at least a bachelor degree qualification.

- **Staff Attendance**

Staff attendance was calculated as a percentage of the full time equivalent employees who were absent through sickness and approved leave throughout the year. Of a total of 9240 days when staff could have been present, 346 days of absences were recorded. This represents a staff attendance rate of 96%

- **Conditions of Service**

In 2014 Alta-1 College maintained teachers' salaries in parity with the State School Teachers Award. Teachers are given a yearly pay rise to ensure that the level of pay remains competitive with their colleagues in the state school sector. Staff members are employed under conditions consistent with the National Teachers' Award via Alta-1 specific contracts.

- **Professional Development**

Throughout 2014, staff members participated in numerous professional development activities in a variety of areas including: curriculum, pastoral care, compliance, networking, administration and leadership. 324 days were devoted to professional development representing an average of 9.53 days for each staff member. A total of \$56,026 was invested in this area

### **Courses Attended by Staff**

Admin Leadership Course, Mental Health – Gatekeepers, Aquatic Rescue, Staff Conference, Part Training, Occupational health & Safety Rep Training, Self Confidence & Assertiveness Training, Bachelor of Social Sciences (Creative living and working with groups & communities), Middle School Planning, VET co-ordinators Network Meeting, Aspiring Leadership Course, The Walk to Emmaus, CARE Schools Conference, AISWA - Leading Improvement, Innovation and Change, Consensus Moderation, AISWA - The Struggling reader, AISWA - PC Introduction to Office 365, Care School Literacy Network, Grants Webinar, Math Foundations Planning Day, Social Media Boot camp, Mandatory Reporting of Child Sex Abuse, The Path 2014, CSA National Business Managers Conference, Microsoft Ed Transformation, Building Resilience to Mood Disorders, St John CPR, St Johns First Aid Course, TAE Cert IV

### **Board Members**

Alta-1 College has an outstanding independent board that oversees the governance of the college. The College Board for 2014 was comprised of:

<b>College Board of Governance</b>		
Mr Alan Brown	Chairman	Engineering Consultant
Mr Glenn Bergsma	Board Secretary	Consultant
Mr Garfield Thompson		Psychologist
Ps Paul Trinder		Church Pastor and Businessman
Mr Derek Summers		Accountant
PS David Storer		Church Pastor
Dr Martin Bent		Educational Chief Operations Officer

### **ICT Development**

The College updated one third of its laptop's housed within the classes. At each site is a wireless network giving access to a complete trolley of laptops able to access digital storage and printing, as well as filtered access to the Internet.

The College changed information technology service provides to LEAP Consulting

### **Pastoral Care**

The care and well being of students, staff and the wider Alta-1 community is paramount and continues to be a focus within the school.

Over the course of 2014 the staff further developed the personal recover and community building course and its application. This course facilitates the staff member responsible for the student's care to gain insight into the specific socio-emotional areas a student is working through in their lives, to better help them engage in their studies

## **Buildings and Grounds**

Alta-1 currently does not own any of its buildings. Lease arrangements through a memorandum of understanding ensure a synergistic relationship with the host organization. All buildings are managed by the host organization to a standard that allows them to be licensed as buildings for educational purposes. Alta-1 conducts regular occupational health and safety checks of the specific school areas, ensuring that they are compliant with the relevant standards.

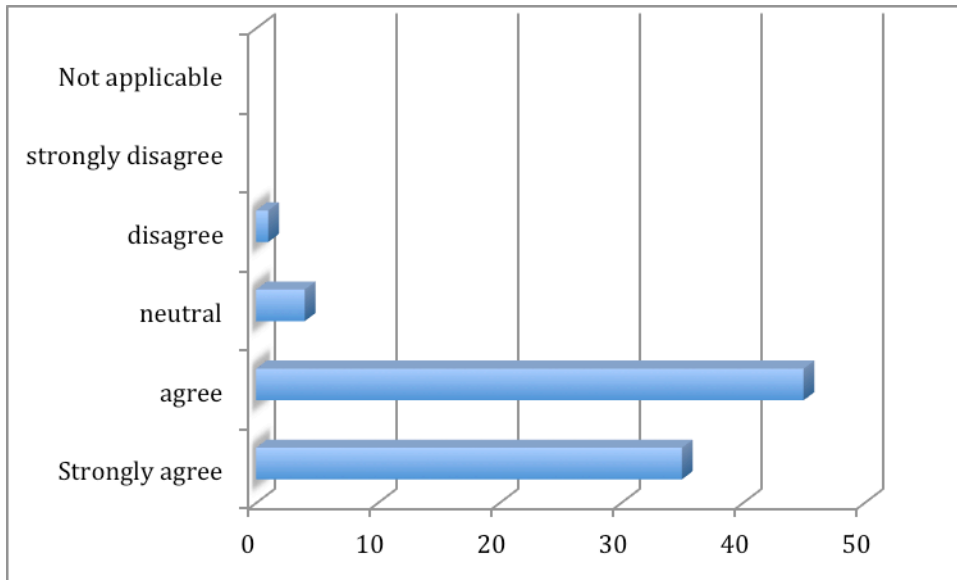
## **School Income by Funding Source**

<b>Government Body or Agency Source</b>	
DEEWR:	\$3,097,183
DESWA:	\$2,053,214
AISWA:	\$104,700
Tuition fees:	\$128,443
Chaplaincy:	\$20,000
Misc:	\$37,185
Workers Compensation – Reimbursement	\$26,151
Total	\$5,471,076

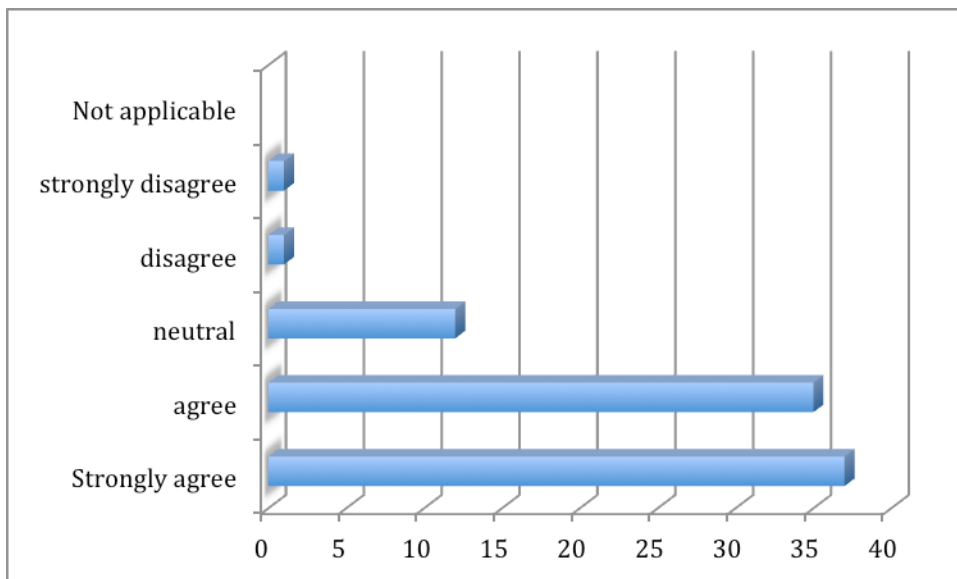
## Staff and Student Survey Results

In 2014 Alta-1 sites conducted a series of surveys with parent/guardians, students and staff members associated with the College. Below are a few of the responses to some of the areas surveyed:

### **Student Satisfaction Survey Results**

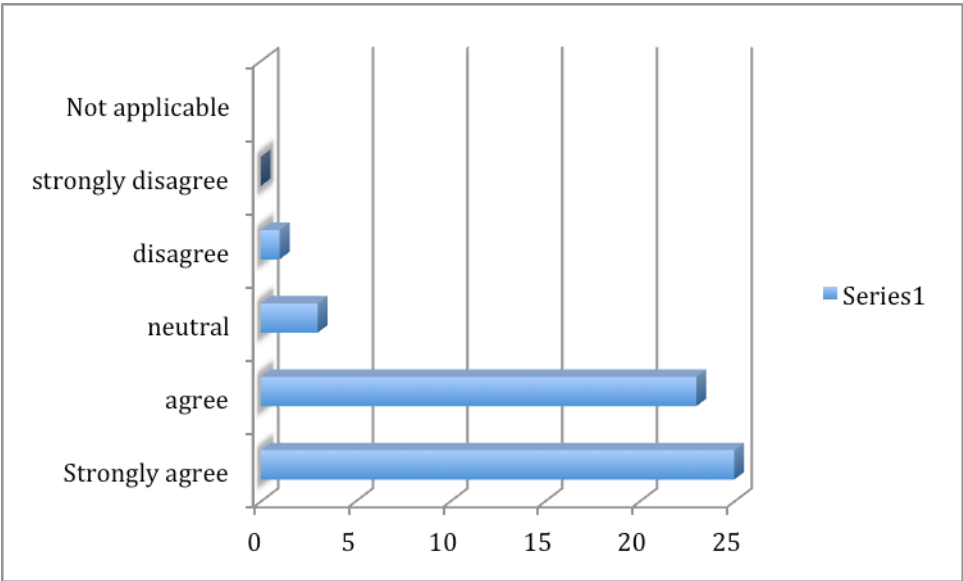


Most staff members are enthusiastic about teaching

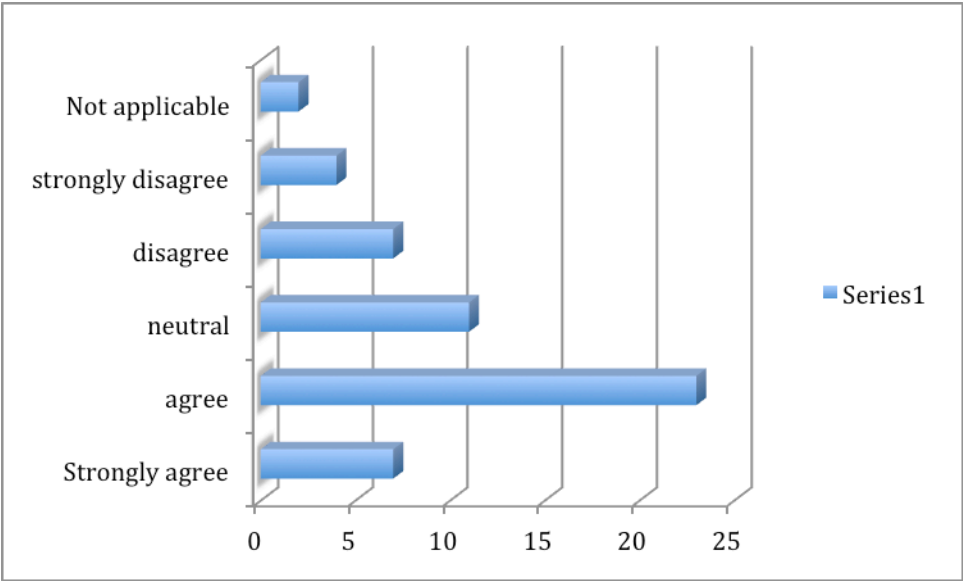


Staff members value what students have to say

**Staff Satisfaction Survey Results**



I have real job satisfaction in my current role



New staff are provided with effective induction